

Formulate Essential 8' Vertical Curve

FMLT-ESS-V8-01

Formulate™ Essential 8ft displays have customary frame features, are portable and come in Straight, Vertical Curved and Horizontal Curved options. The economy aluminum tube frame features bungee cords, rounded corners and comes with a one year limited warranty. Simply pull the pillowcase fabric graphic over the frame and zip. All displays come with a canvas carry bag.



We are continually improving and modifying our product range and reserve the right to vary the specifications without prior notice. All dimensions and weights quoted are approximate and we accept no responsibility for variance. E&OE. See Graphic Templates for graphic bleed specifications.

features and benefits:

- Economy aluminum tube frame features bungee cords and rounded corners
- Easy to store and ship
- Quick to set up
- Kit includes: one frame, pillowcase zipper fabric graphic and canvas carry bag
- One year limited hardware warranty against manufacturer defects

dimensions:

Hardware	Graphic
Assembled unit: 96.5" w x 88.5" h x 25" d 2451mm(w) x 2248mm(h) x 635mm(d) Approximate weight: 9.5 lbs / 4.3 kgs	Refer to related graphic template for more information. Visit: www.exhibitors-handbook.com/graphic-templates
Shipping	
Shipping dimensions: 32.25" l x 11" w x 7" h 819mm(l) x 279mm(w) x 178mm(h) Approximate shipping weight: 11 lbs / 4.98 kgs	

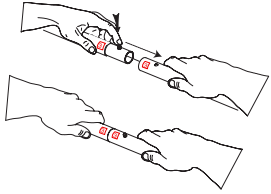
additional information:

Graphic material: dye-sublimation zipper pillowcase fabric	
---	--

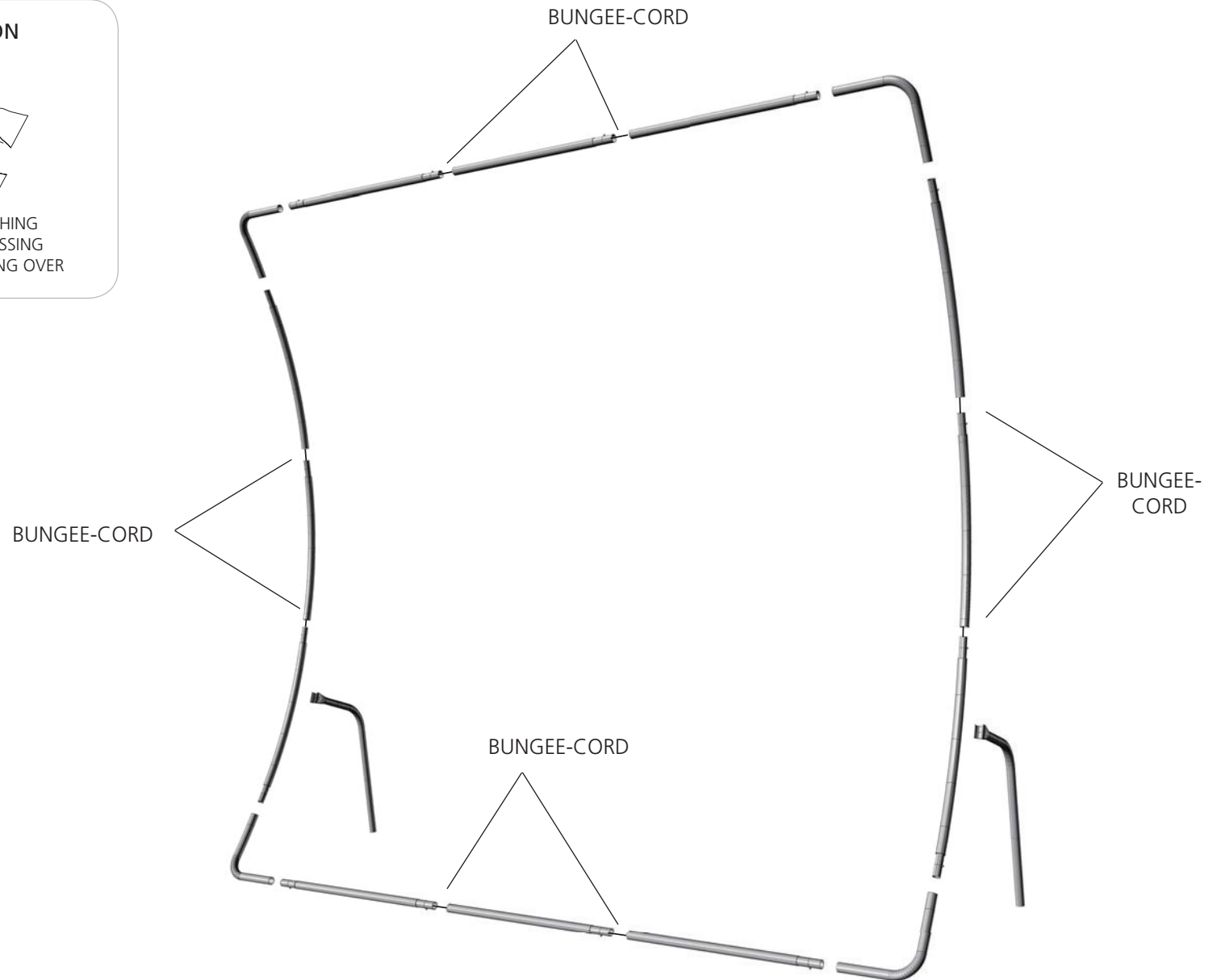
Assembly:

Assemble unit by laying tubes flat on the floor. Connect the bungee tube rails by pressing the push snap buttons in and sliding over (see drawing below) following the number labels listed, T1 to T1, T2 to T2 and so on.

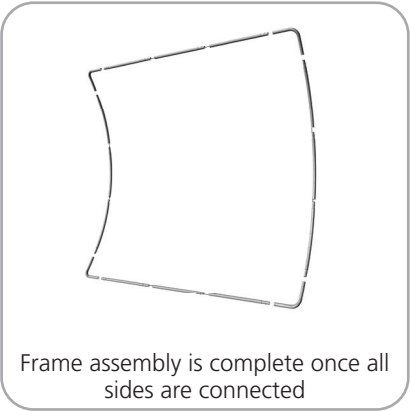
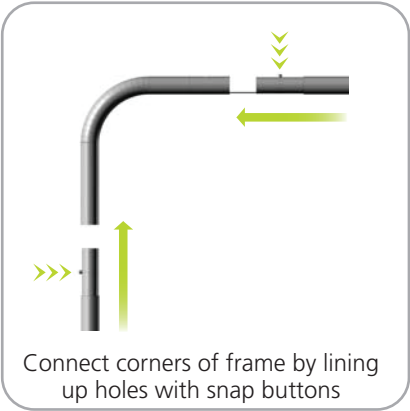
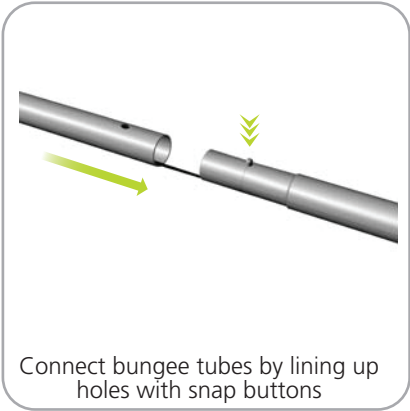
TUBE CONNECTION



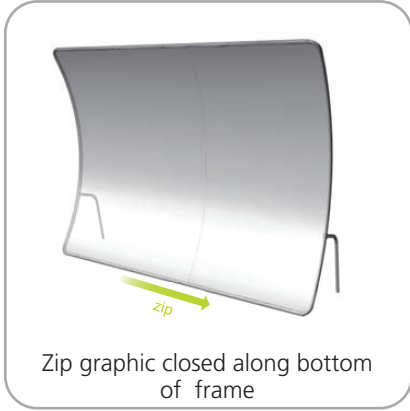
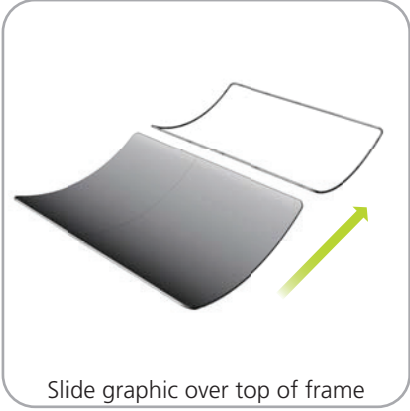
CONNECT TUBE BY MATCHING
NUMBER TO NUMBER, PRESSING
PUSH PIN BUTTON AND SLIDING OVER



STEP 1: ASSEMBLE FRAME



STEP 2: ATTACH GRAPHIC



STEP 3: ATTACH FEET

