

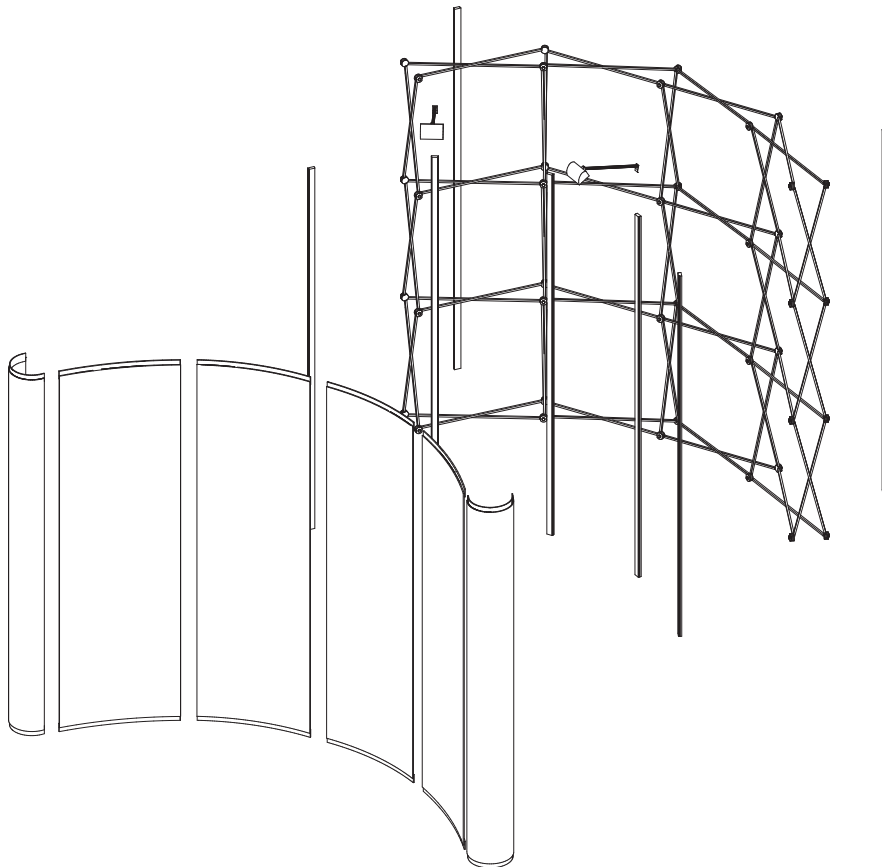
20' Serpentine Ellipse / Follows setup of 2 10ft units

- Step 1. Place frame with arrow facing up on floor, then expand frame. When frame is at full height, lock the connectors.
- Step 2. Unfold magnet rails and align the top keyslot with the top hub of the display, slide magnet rail downward to align each keyslot with each hub from top to bottom.
- Step 3. Hang fabric or graphic panels by placing the hooks on the top panel stiffener on the pins at the top of the magnet rails, then align with the magnets as necessary.

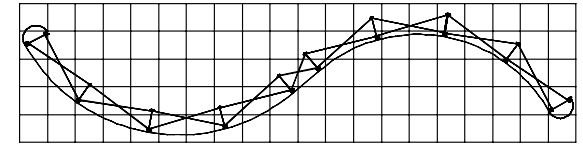
- Step 4. Hang fabric or graphic end panels in similar fashion using the front and back magnet rail on either side of the display.
- Step 5. Attach lights to the top of the magnet rail by sliding the tab at the base of the light stem into the top of the magnet rail.



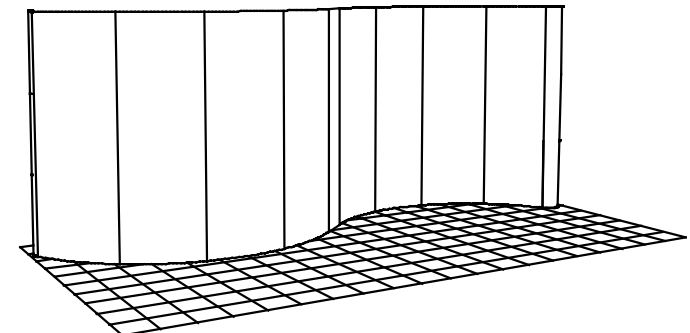
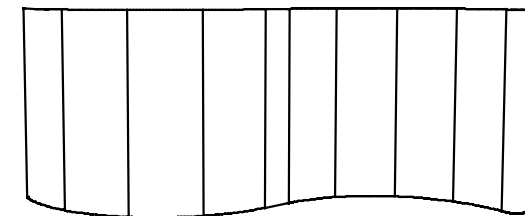
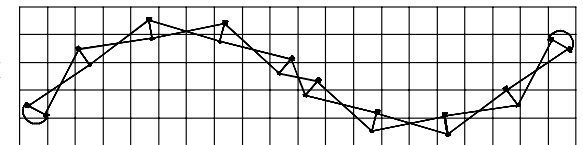
NOTE: the two individual 10ft frames join together in the center with the 3rd fabric or graphic end cap. You rotate one 10ft frame 180 degrees to form the serpentine shape. Your shape will be dictated by the direction you choose at purchase.



Convex/Concave



Concave/Convex



Oval Case to Counter Conversion Kit

- Step 1. Place plastic countertop on top of oval case.
- Step 2. Wrap fabric/graphic skirt around oval case, positioning between the overhang 1" below the top of the case and molded wheel wells at the base of the case.
- Step 3. Secure fabric/graphic wrap by adhering velcro hook to the opposing side of the fabric/graphic wrap.

